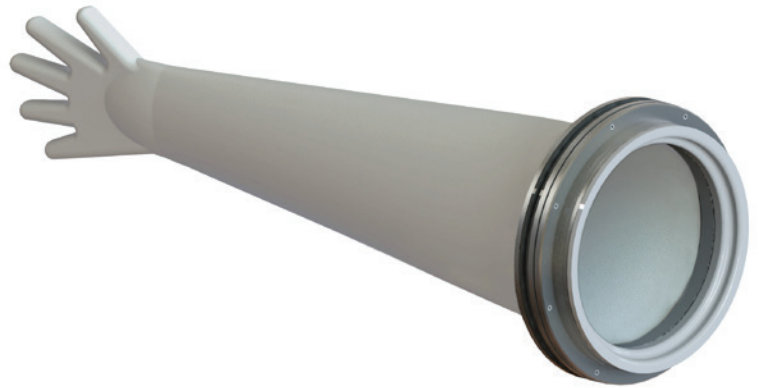


## Push-Through Glove Ports

*A safe, fast-change glove port solution with multiple accessories to expand operational capabilities.*

CRL Push-Through Glove Ports are used in isolators or gloveboxes where applications require operators to work with potent or hazardous materials.

The CRL Push-Through Glove System allows for the interchangeability between gloves, viewing windows, bag-outs, and plugs without losing enclosure containment or risking the spread of contamination. The two main components of the system are the glove ring, which mounts to the wall and the support ring or accessory that creates a compression seal inside the enclosure ring.



### *Application Solutions:* **LIFE SCIENCE & NUCLEAR**



POTENT



R&D/D&D



RADIOPHARMA



MATERIAL  
TRANSFER

### Features & Benefits

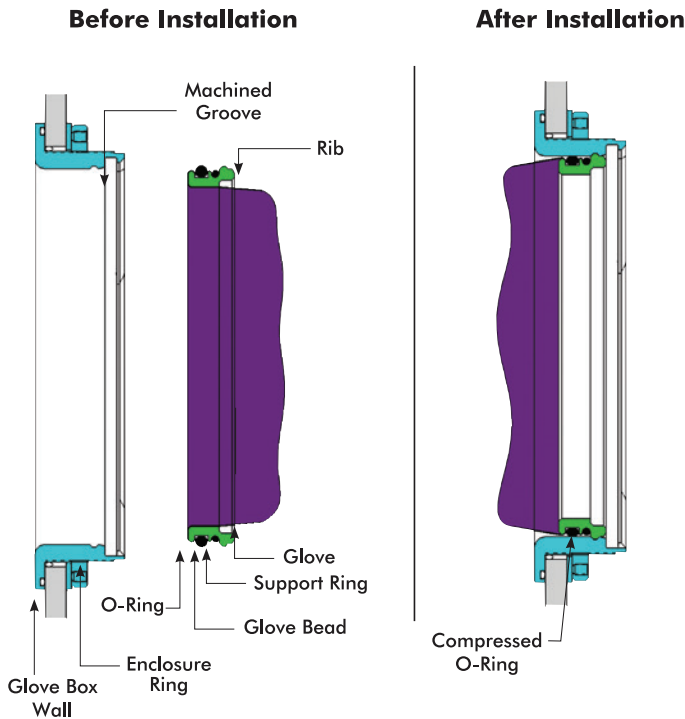
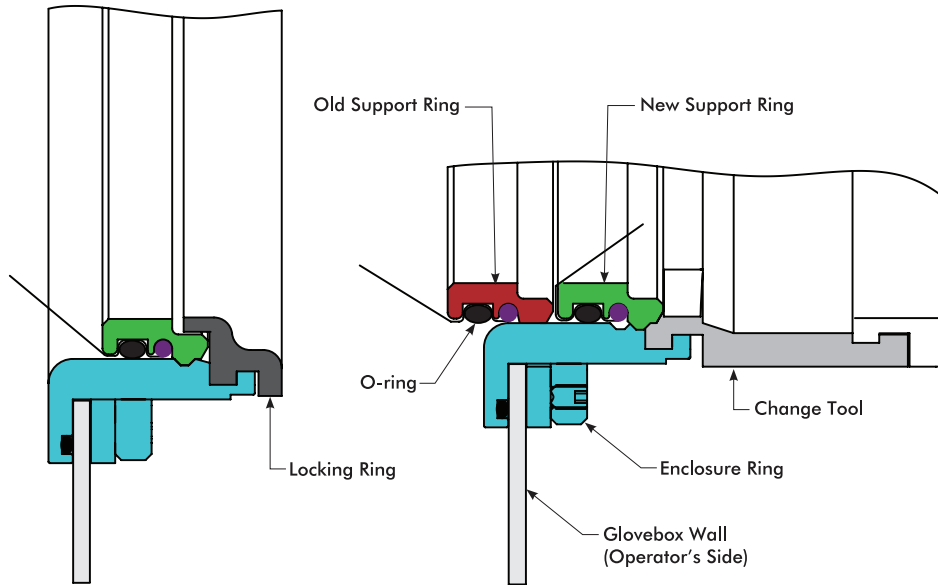
- Push-through accessories available: viewing windows, bag-out bags, plugs, and utility panels
- Safety covers available; sensors added as customizable option
- Clamp-in or weld-in glove rings available
- Push-through ejection tools available for safe, fast glove or accessory change
- Push-through Glove Port systems can be mounted in a wide variety of materials including lexan, glass, and metal panels

RH\_PTGP-F\_0318\_US

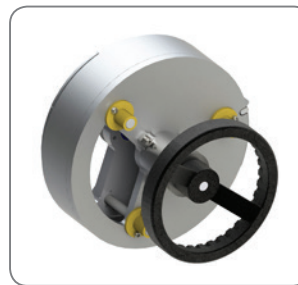
# Push-Through Glove Ports

The CRL Push-Through Glove Port System design utilizes an independent O-ring seal, under high compression to maintain the primary seal between the enclosure ring (metallic ring), the glove support ring (plastic), and the glove as demonstrated below. The seal is established by forcing the glove sleeve through a serpentine path and securing it between the support ring and enclosure ring with an independent O-ring.

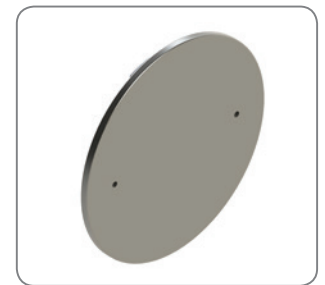
When installed, the seal is under high compression and securely held in position even without the use of a locking ring. Variations in glove thickness, resulting from the glove manufacturing process (dipping), are easily accommodated by O-ring compression and ensure a consistent high integrity seal is maintained with any 15 to 30 mil commercial glove.



## Accessories



Short Ejection Tool



Safety Cover



Glove Support Ring



Ejectable Plug Assembly

RH\_PTGP-F\_0318\_US