

## Retro-Fit Glove Ports

### *Easily and efficiently transform existing ports to utilize CRL Push-Through technology*

The CRL Retro-Fit Glove Ports allows non Push-Through ports to become Push-Through ports that are capable of utilizing all CRL Push-Through technology. CRL Push-Through Glove Ports are used in gloveboxes where applications require operators to work with potent or hazardous materials.

The CRL Push-Through Glove System allows for safe and fast interchangeability between gloves, viewing windows, bag-outs, and plugs without losing enclosure containment or risking the spread of contamination.



### *Application Solutions:* **NUCLEAR**



R&D/D&D



RADIOPHARMA



MATERIAL  
TRANSFER

### **Features & Benefits**

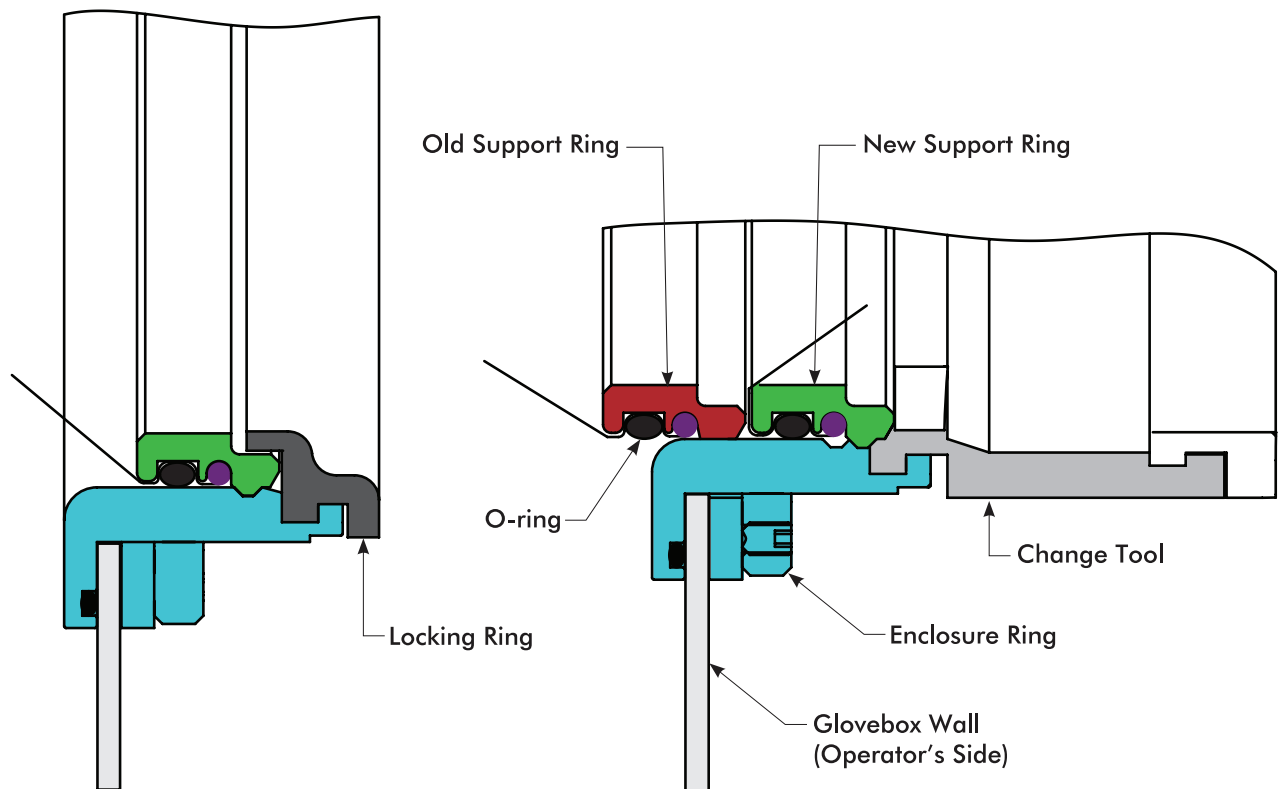
- Easily convert existing ports to Push-Through technology
- Push-through ejection tools available for safe, fast glove or accessory change
- Accessories available to expand versatility of glove ports
- Safety covers available; sensors added as customizable option
- Available in 8" round; custom configurations also available

RH\_RFGP-F\_0918\_US

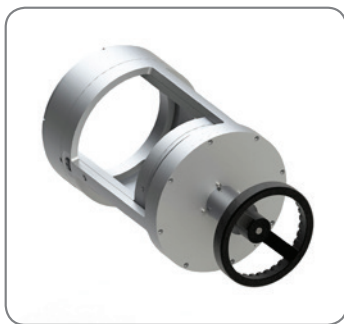
# Retro-Fit Glove Ports

The CRL Push-Through Glove Port System design utilizes an independent O-ring seal, under high compression to maintain the primary seal between the enclosure ring (metallic ring), the glove support ring (plastic), and the glove as demonstrated below. The seal is established by forcing the glove sleeve through a serpentine path and securing it between the support ring and enclosure ring with an independent O-ring.

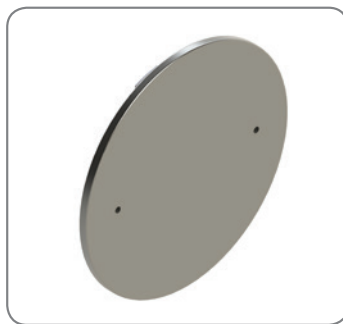
When installed, the seal is under high compression and securely held in position even without the use of a locking ring. Variations in glove thickness, resulting from the glove manufacturing process (dipping), are easily accommodated by O-ring compression and ensure a consistent high integrity seal is maintained with any 15 to 30 mil commercial glove.



## Accessories



Ejection Tool



Safety Cover



Glove Support Ring



Ejectable Plug Assembly

RH\_RFGP-F\_0918\_US